



Immunity in Focus

US Trends in Adult Immunizations in Retail Outlets

Nandini Selvam, PhD, MPH
Vice President & General Manager
IQVIA Government Solutions

National Foundation for Infectious Diseases
2025-2026 Respiratory Season News Briefing
December 3, 2025

IQVIA Audit Trail Vaccinations Data across Retail Channels

*National Prescription Audit (NPA)**

Vaccine (# of vaccines administered)	2024 – 2025 Season 8/02/24 – 11/21/2024	2025 - 2026 Season 8/01/25 – 11/21/2025	Percent Change
COVID	24.2M	17.8M	-27%
Influenza	34.4M	32.4M	-6%
Pneumococcal Conjugate	1.5M	2.0M	27%
RSV	2.4M	1.6M	-34%

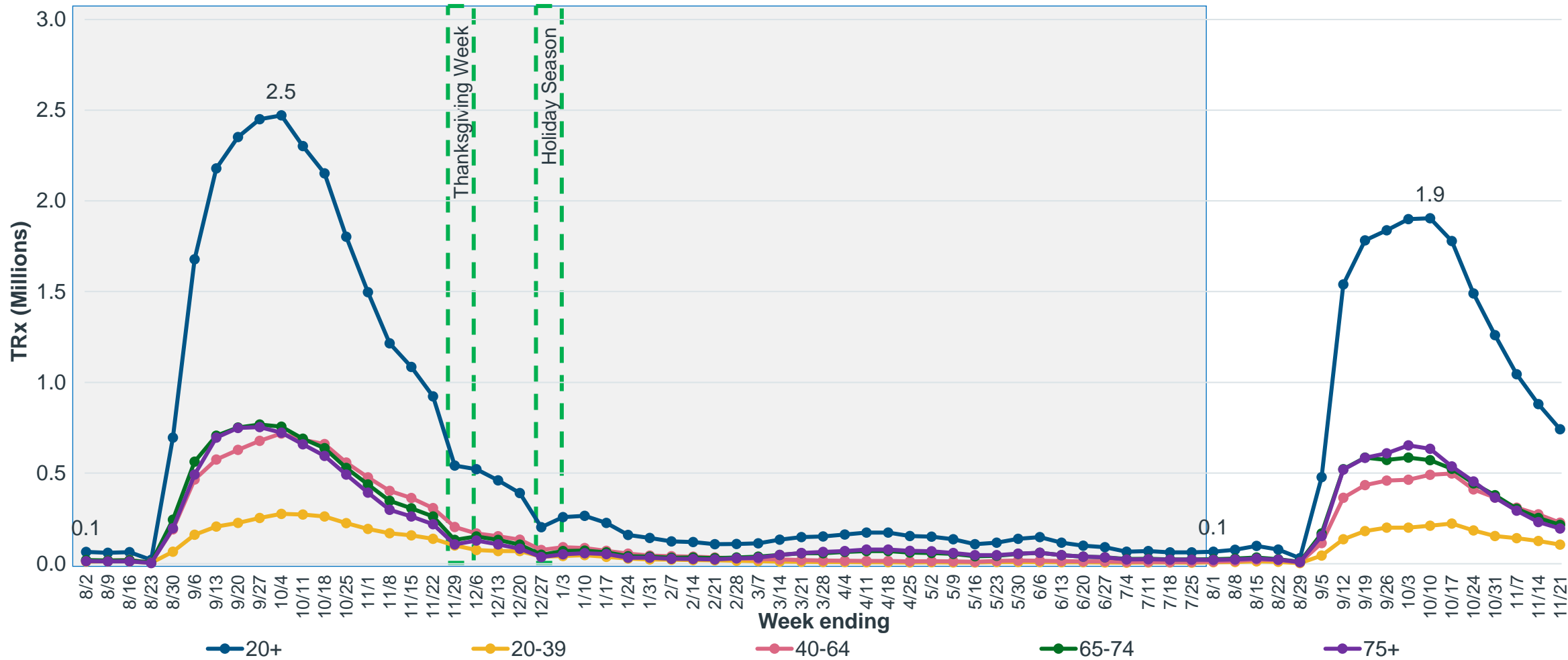
IQVIA’s National Prescription Audit (NPA) provides comprehensive insights into U.S. prescription activity across retail, mail service, and long-term care channels. It captures **outpatient retail prescription transactions**, projecting to represent the full universe of prescription demand. This **data does not include all vaccination data**, including any vaccination data from hospitals, clinics, providers or other non-retail locations.

Sources: Rx Weekly (NPA) data till the week ending 11/21/2025

COVID-19 Vaccinations Down ~27% in 2025-2026 Season vs. Prior Season*

Vaccine uptake among 65+ consistently better than younger age groups across seasons

Weekly TRx for COVID Vaccines in Retail Setting

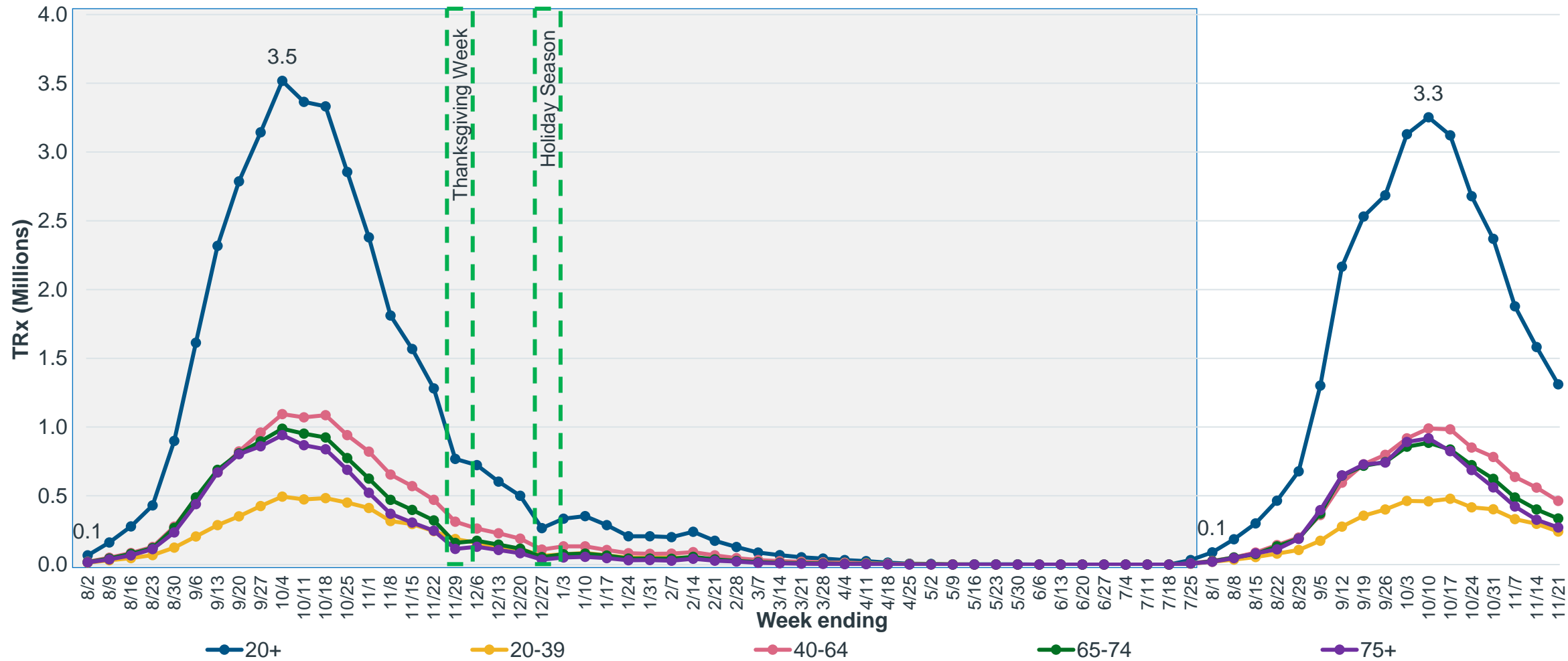


Sources: Rx Weekly Extended Insights (NPA) data from the week ending 08/02/2024 till the week ending 11/21/2025 in Retail settings

Influenza Vaccinations ~6% Lower in 2025-2026 Season vs. Prior Season*

Vaccine uptake among 65+ consistently better than the younger populations

Weekly TRx for Influenza Vaccines

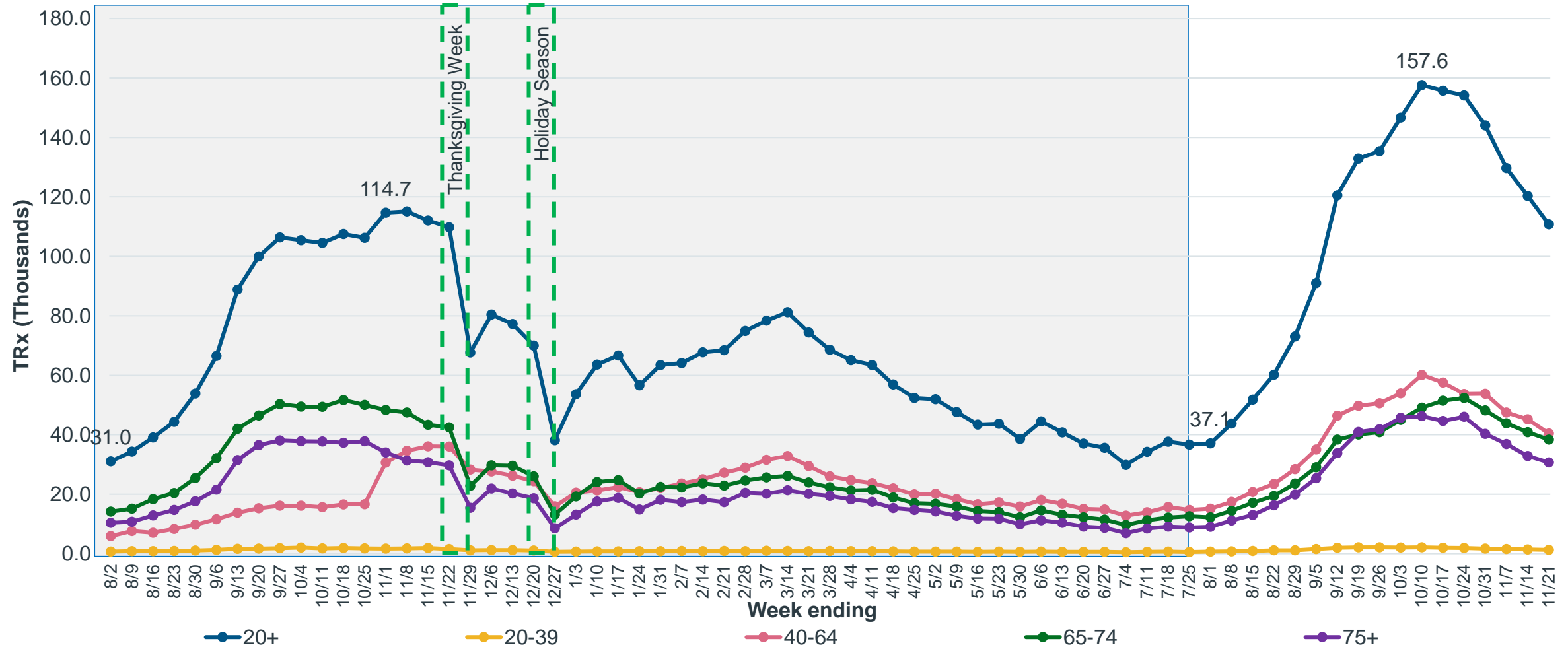


Sources: Rx Weekly Extended Insights (NPA) data from the week ending 08/02/2024 till the week ending 11/21/2025

Overall, ~27% Increase in Pneumococcal Conjugate Vaccinations

Routine vaccine recommended for 50+ years (vs. previously 65+ years)

Weekly TRx for Pneumococcal Conjugate Vaccines

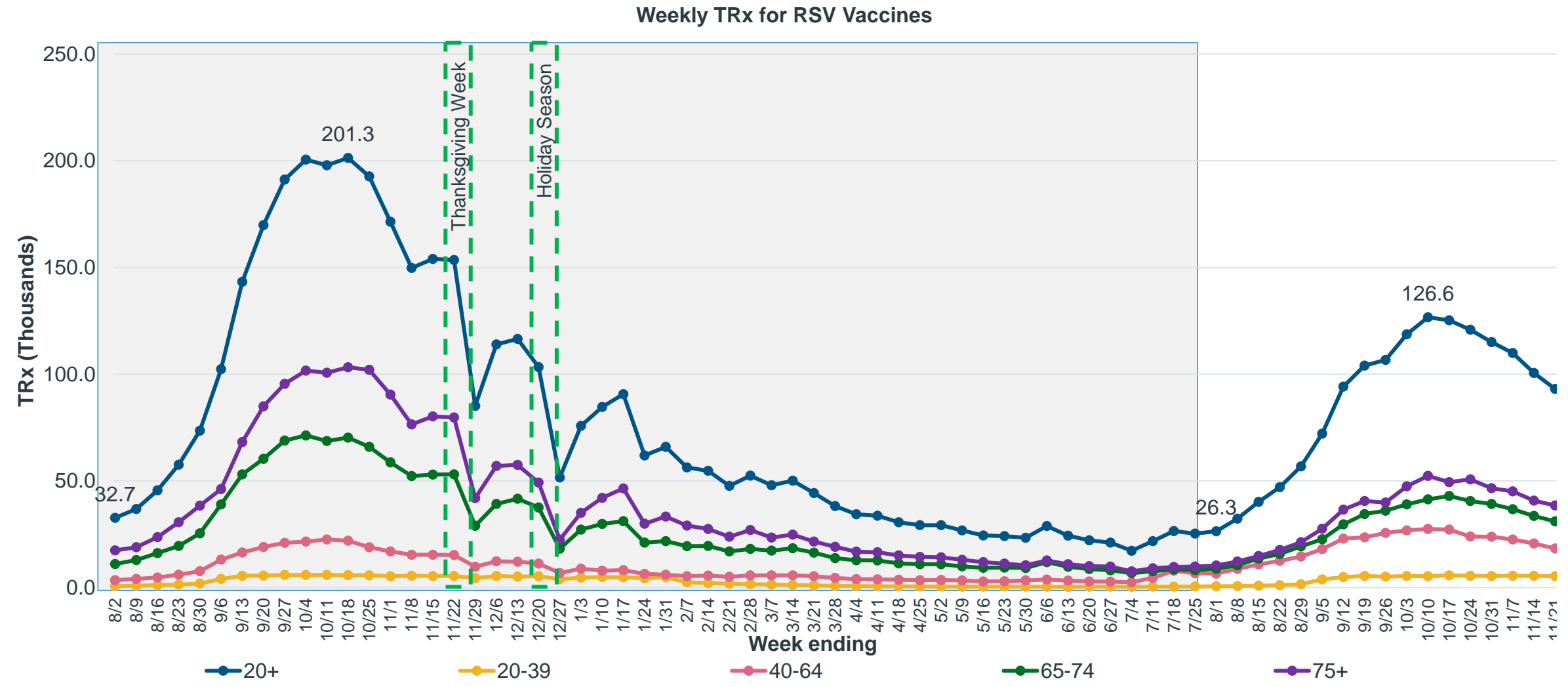


Sources: Rx Weekly Extended Insights (NPA) data from the week ending 08/02/2024 till the week ending 11/21/2025

*Pneumococcal is not a yearly vaccine; PCV20/PCV21 – single dose; PCV15 – one dose followed by PPSV23 at least 1 year later

Overall decrease in RSV Vaccine uptake in 2025-2026 season vs. prior season*

Current recommendations indicate a single administration of the vaccine for 75+ years; and high-risk adults age 50-74 years



Sources: Rx Weekly Extended Insights (NPA) data from the week ending 08/02/2024 till the week ending 11/21/2025
 *RSV is not a yearly or seasonal vaccine. We have categorized as such for comparability to other seasonal respiratory vaccines